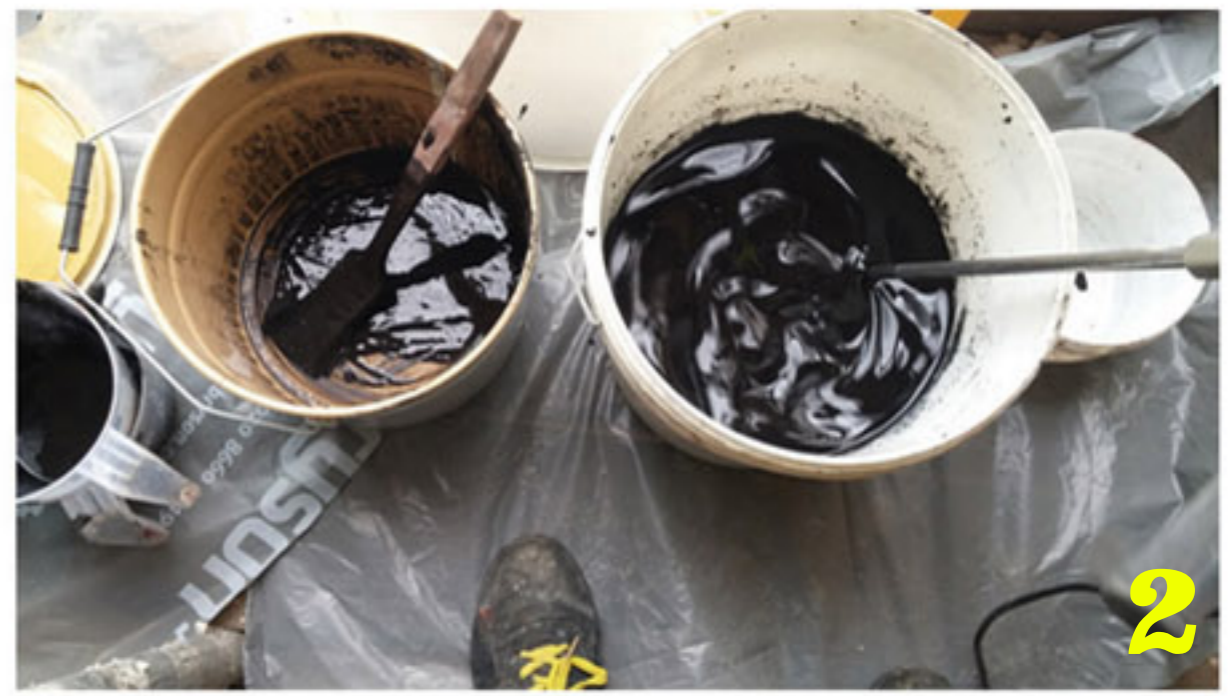




**Stir the mix in the tin then transfer all the contents into large bucket. There may still be sludge at the bottom.**



**Once all the contents are in the bucket, mix well using the power mixer.**



**The mix should now be smooth and contains no lumps.**



**Stir again using long handled brush, to ensure the mix is consistent.**



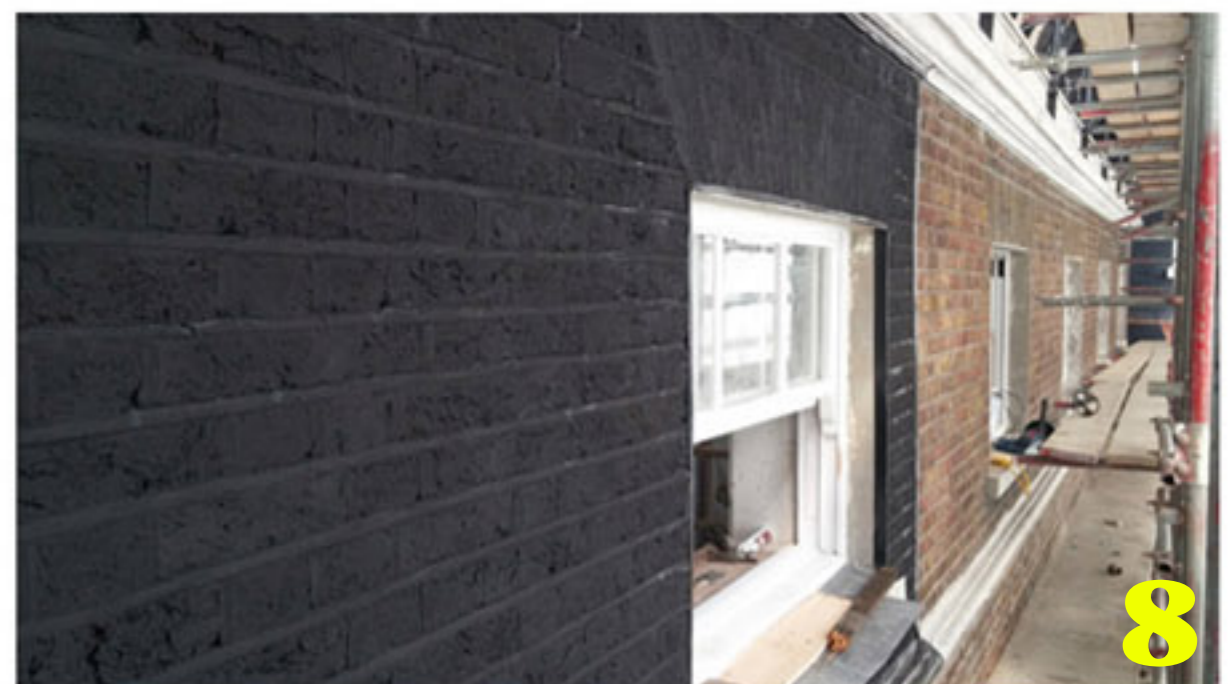
**Fill a jug with the freshly mixed fluid.**



**Stir again using the smaller brush.**



**Transfer to a paint kettle, just enough to cover the top of the bristles.**



**Keep stirring the mix each time you dip the brush back in the paint kettle. This will produce consistent results!**